

# Installation Instruction

Kitchen Faucet  
E-FA-0224

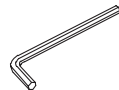
# East Grove

• H O M E •

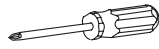
## TOOLS YOU NEED



Adjustable wrench



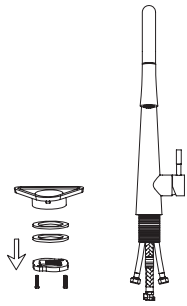
Hexagon wrench



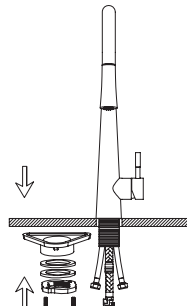
Phillips Screwdriver

## BEFORE INSTALLATION:

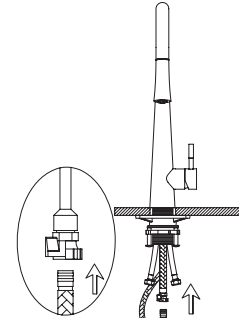
- Please check that all components are present.
- Make sure turn off hot and cold water supply below the sink.
- Before installation ensure that all feed lines are clear of debris and on/off valve is present.
- Ensure water pressure is between 20-125 PSI (includes combination of hot and cold feed lines).
- Pictures in the manual are general in content and may not present exactly your purchased faucets. If you are having difficulties please contact a professional plumber.
- If you will be away from home for an extended period you should shut off the main water supply.



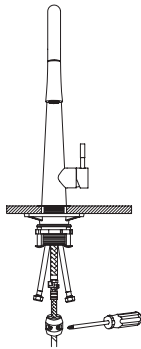
**Step 1.** Begin by removing the locking nut, metal washer, and rubber washer, if they are already installed.



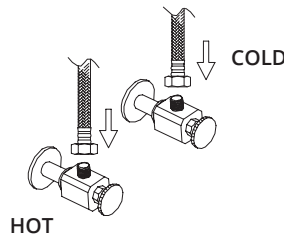
**Step 2.** Insert the faucet through the center hole of the sink. Place the rubber washer followed by the metal washer onto the underside of the sink. Then, secure the faucet in place by tightening the lock-nut. If you had removed the hose connector, reinstall it and make sure to include a small rubber washer. Use a screwdriver to tighten the lock-nut screws firmly, ensuring that the faucet is secure and won't twist.



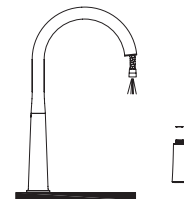
**Step 3.** Take the pull-out hose and push it into the hose connector until you hear a click sound, indicating that it is properly connected.



**Step 4.** To ensure smooth retraction of the spray head, install the hose weight kit. On the side of the hose that connects to the spray head, measure 15 inches down from the body of the faucet. Attach the hose weight kit at this point. Now, pull out the spray head and check if it moves easily and retracts smoothly.



**Step 5.** Attach the flexible hose to the water supply with an adjustable wrench to ensure a tight connection to prevent leaks.

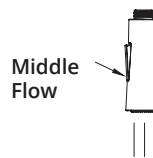


**Step 6.** Hold onto the spray-head hose and unscrew the spray head with hexagon wrench. Remove the spray head along with the rubber washer. Next, turn on the faucet to flush the hose and feed line for approximately 1 minute, allowing any debris to be flushed out. After flushing, turn off the faucet and re-install the rubber washer and spray head securely.



Spray

Turn the faucet on and press the top of the spray button to change to spray



Middle Flow

Turn the faucet on and press the bottom of the spray head button to change to stream.

Remember to follow any additional instructions provided by the manufacturer for your specific faucet model.

EastGroveHome.com  
Phone: 888-602-0990

Corporate Headquarters  
1000 N West Street, Suite 1200  
Wilmington, DE 19801

\*Corporate Address ONLY – Do not send returns here